

M系列

M SERIES

直线电机驱动 —
高速线切割放电加工机

LINEAR MOTOR DRIVE HIGH SPEED
WIRE CUTTING DISCHARGE
PROCESSING MACHINE



CNC全新开发控制系统 —

CNC NEW DEVELOPMENT CONTROL SYSTEM

昆山苏盛杰机械有限公司
KUNSHAN SU SHENGJIE MACHINERY CO., LTD



客户最高性价比系列MSERIES

SUSHINK

A. LINEAR MOTOR DRIVE .直线电机驱动

The linear motor combined with linear grating ruler drive achieves higher responsiveness and positioning accuracy than the previous ball screw drive. Because the linear motor is used, the transmission mechanism components do not distort or wear, which can keep the machine precision unchanged for a long time, avoiding the reverse clearance (back backlash) error caused by the wear of the traditional ball screw.

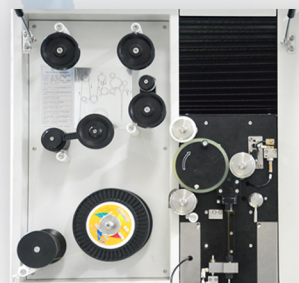


B. MULTIFUNCTION 多功能.

The M Series standard comes with a number of convenient features; Such as corner arc control, new processing water level control system, new variable frequency liquid temperature control system, new lubrication and sealing methods of the lower reach arm and water baffle, and new wire receiving methods, so as to improve the stability and processing accuracy of the machine.

C. HIGH SPEED AUTOMATIC THREADING DEVICE .高速自动穿丝装置

This series adopts high-speed automatic threading device (FJ-AWT), which greatly improves the probability of success of automatic threading. It is equipped with a unique wire tension servo control device and AWT annealing treatment function, which ensures the straightness of the electrode wire, improves the operation performance, reduces the operating time, and can realize long-term unmanned processing operation.



02

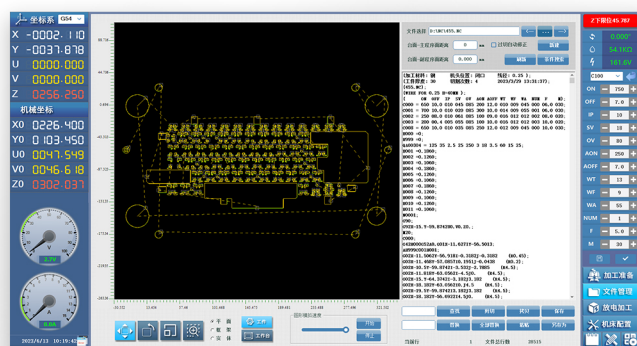
新操作系统 New operating system CNC线切割放电加工机 CNC WIRE CUTTING DISCHARGE PROCESSING MACHINE



全新CNC操作界面 NEW CNC OPERATING INTERFACE

We have introduced a new interface for novice users and designed it with more emphasis on user experience. The interface style is simple and generous, the color is bright and soft, and the operation principle is humanized.

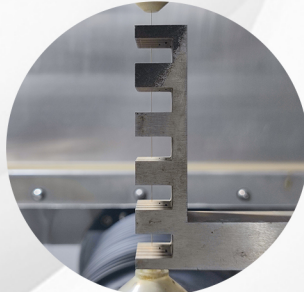
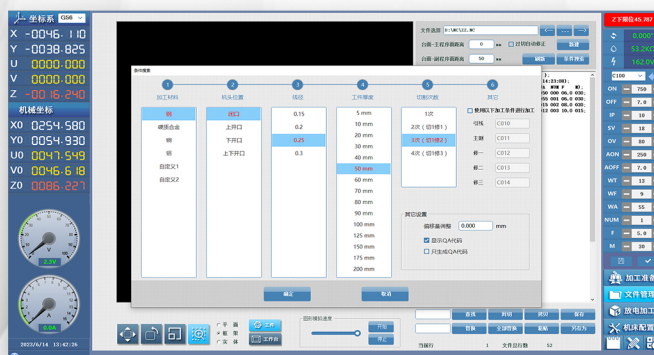
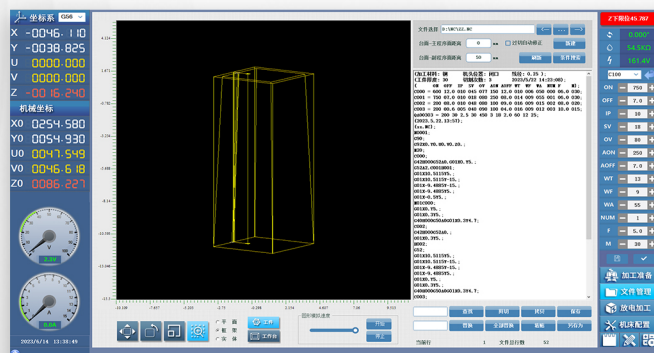
At the same time, we also added a multi-group coordinate system function in the operation interface, so that users can choose different coordinate systems more convenient and flexible. Users can easily switch between different coordinate systems by simple click operation, and can switch multi-coordinate systems on the same operating interface.



高可靠性的CNC控制 HIGH RELIABILITY CNC CONTROL

The new machining equipment has a new Angle control function built in, and through this design, it can easily control its rotation Angle and achieve precise cutting. In the processing process, it can also monitor and adjust the movement trajectory in real time to achieve higher precision and efficiency of production.

It is worth mentioning that this device also has a rich library of processing conditions built in. Users only need to enter simple keywords or parameters to quickly search, improve the efficiency of the operation.



主机 HOST MACHINE	M400QSL	M500QSL	M600QSL
maximum machined workpiece	960*580mm	990*600mm	1020*630mm
X-axis travel	450mm	500mm	600mm
Y-axis travel	320mm	350mm	400mm
UV axis travel	80*80mm	100*100mm	100*100mm
Z-axis travel	200mm	300mm	300mm
Maximum taper	±18°(板厚:80mm)	±20°(板厚:100mm)	±20°(板厚:100mm)
Maximum workpiece size	800*550*160mm(浸水加工)	900*580*240mm(浸水加工)	900*580*240mm(浸水加工)
	800*550*195mm(喷水加工)	900*580*295mm(喷水加工)	900*580*295mm(喷水加工)
Maximum workpiece mass	400KG(喷水加工)	400KG(喷水加工)	400KG(喷水加工)
	300KG(浸水加工)	350KG(浸水加工)	350KG(浸水加工)
Wire diameter	0.15-0.3mm	0.15-0.3mm	0.15-0.3mm
Wire tension	3-22N	3-22N	3-22N
Wire feed speed	Max.420mm/sec	Max.420mm/sec	Max.420mm/sec
Distance from floor to table surface	1050mm	1050mm	1050mm
Machine body size (width * depth * height)	1650*1950*2050	1650*1950*2150	1650*1950*2150
Machine mounting dimensions (W * D)	2800*2800mm	2900*2900mm	2900*2900mm
Machine body mass	3200KG	3350KG	3500KG
Total electrical capacity	3相380V 50/60 HZ 13KVA	3相380V 50/60 HZ 13KVA	3相380V 50/60 HZ 13KVA

数控电源装置	CNC POWER SUPPLY UNIT
Maximum machining current	25A
Power input specification	380V 50/60HZ
Control system	WINDOWS 11
Control device	Industrial grade computer
Screen display unit	27 "high response ten point touch screen
Input mode	Industrial keyboard, mouse, USB, network
Maximum number of control axes	5-axis
Number of concurrent axes	4-axis
Minimum command unit	0.001mm
Instruction unit	mm
Processing condition	999group
Driving mode	XY axis linear motor, UVZ servo drive
Position detection mode	Full closed loop (0.5um resolution linear grating)
Various compensation	Step error compensation/back backlash compensation
Graphic display function	2D/3D simulation machining
Syntactic instruction	Universal G/M code

水过滤系统	WATER FILTRATION SYSTEM
Tank Capacity (L)	850L
filter	TW-40*2
Conductivity control	System automatic
Refrigeration system	Gree variable frequency water cooler

AWT自动穿丝系统	AWT automatic threading system
Control mode	Manual /M instruction
Threading mode	Air flow/jet water
Thread selection	Starting point/breaking point
Cutting method	Electric fusing
Wire arrangement	Roller and blow

标准配件: Standard fittings

Ion exchange resin *10L	Filter paper mesh*2	Work light *1
Vertical Alignment*1	Clamping fixture*4	Energize Carbides*2
Variable frequency refrigerator*1	Flushing Nozzles*1	Voltage stabilizer*1
Ceramic Plate(Lower/Upper) *1	Diamond Guide*2	Signal lamp*1

选择配置: Selective configuration

Hand thread hose line 0.1um resolution grating ruler overbridge

安装环境: Installation environment

Power supply specification: 3相AC380V±10% 50/60HZ.

Air source requirement: Above 0.5MPa.

Installation ground: does not transmit vibration and shock place,
amplitude is recommended below 1um.

Gas medium: no dust oil mist place.

Environment requirements: Operating temperature range: 10-35℃.

Environment: High precision Environment: 22 ° C ±1 ° C is recommended.

Environmental requirements: The machine is not exposed to direct sunlight,
cold and warm air blowing and other heat places.

Environmental requirements: Working humidity range: 30-75% (no condensation).

昆山苏盛杰机械有限公司
Kunshan Su Shengjie Machinery Co., LTD

江苏省昆山市千灯镇龚巷路19号
电话 (Tel) : 0512-36690740
http://www.sushink.com
E-mail:ks_xxj@163.com
全国服务据点: 宁波/东莞/苏州/重庆
National service base: Ningbo/Dongguan/Suzhou/Chongqing

Distributor/Agent:

* The company reserves the right to change the specifications and color design



SUSHINK EDM 基于研发需求
本公司保有修改上述规格的权利
如有变更恕不另行告知
本产品内容为截止2023年6月的内容。